

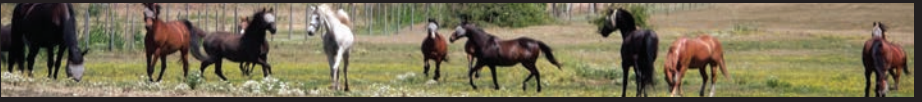
WINTER 2014

NEIGHSAVER

YOUR SEASONAL
EQUAMORE FOUNDATION
NEWSLETTER



4723 HWY. 66, ASHLAND, OR 97520
541.482.5550 | EQUAMORE.ORG



WHY SANCTUARY?

Sara, a beautiful Arabian mare, came to the Sanctuary at age 18 as part of a four-horse seizure by Jackson County Sheriff's Department in 2008. Of the five horses on the property, one of whom had died of starvation, Sara was in the best condition. After she regained her physical health, Sara was moved to a foster home, but was returned one year later. She was adopted by a family in 2009 only to return again three months later. While Sara had regained her health, she was a loner, and disengaged. While lovely, it seemed there was "nobody home." The expression on her face at rescue told the sad story of the emotional toll her neglect and abuse had taken.

In late 2011, nearly two years after her last return to the Sanctuary, Sara began to make a human friend. Later, in 2012, Sara made a horse friend, the wonderful pony mare Sandy. In the summer of 2014, we saw for the first time Sara engage in grooming another horse – an emotionally healthy and natural horse behavior.

Today, Sara comes from the field when called by name! She is often affectionate to humans, interested in her world, sometimes comical and sometimes demanding. In short she is year by year recovering and becoming an emotionally healthy horse. This is why we provide Sanctuary. This is why we no longer adopt out our horses. Even when a horse's physical needs have been met after serious neglect or abuse, the journey toward emotional health takes years. Sara will spend the rest of her life at our Sanctuary, continuing on her journey, with both people and equine friends at her side.

Before Sanctuary



After Sanctuary



WAYS TO GIVE

- Make a One-Time Gift
- Make a Monthly Buy-A-Bale Pledge
- Sponsor a Horse!
- Join a Horse's "Rescue Team" with a Monthly Pledge
- Contribute to our Endowment Fund*
- Include Equamore in Your Estate Plan*
- Donate Appreciated Stock*



Call us at 541.482.5550, use PayPal at equamore.org, or mail us.

* Please call for details on our Endowment Fund, Estate Planning, and Donations of Stock.



EQUAMORE NEWS

We have expanded the Equamore Academy! In an effort to reach out to our community and provide education in the proper care of horses, we are now offering classes in horse care, grooming, and handling. We hope this new program will help people and horses, and like our Oregon Hay Bank program, prevent horses from needing to be rescued.

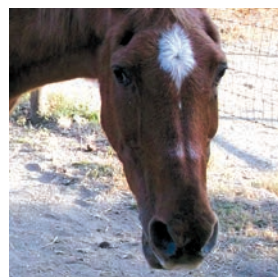
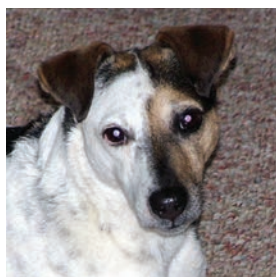
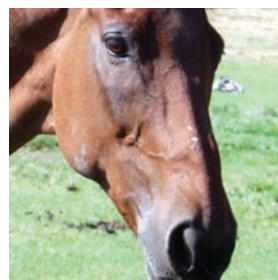
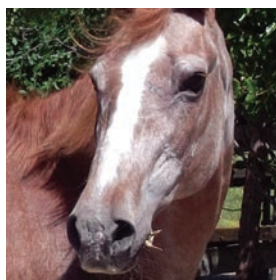
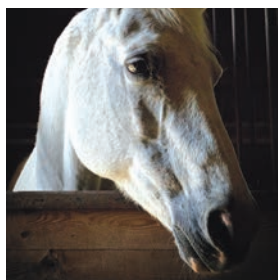
Horse care, grooming and handling classes:

\$25 per class	for monthly donors \$15 per class
\$200 for 10 classes	for monthly donors \$125 for 10 classes
\$350 for 20 classes	for monthly donors \$200 for 20 classes

See our website or give us a call for lunging, riding, and training lessons which are also available.

Lots of Improvements! Our donors have been kind to us, and in 2014 we built a new hay barn and shelter, refenced a significant portion of our property, replaced leaky skylights in the main barn aisle, and taken all steps suggested by our local fire department to prepare for emergencies. Lots accomplished, more to do!

Equamore Mosaic. Local mosaic artist extraordinaire, Karen Rycheck, received a grant to make a mosaic on the exterior of a local building. The design was made using all Equamore horses. (Pictured above.) Can you name them?



Departed Friends. We lost too many friends in 2014. Magic, Sassy, Taz, Buckley, Dugan, and Raffie all left us. (Pictured above, left to right from top.) We were lucky to have known each of these wonderful animals. We miss them, and memories of them and of others that have gone from our Sanctuary to their final sanctuary, keep us walking on.



FEATURED HORSE HAZEL

Hazel, a beautiful Appaloosa mare, was originally rescued by two well-intentioned people, reportedly from an elderly woman in Williams, Oregon. Sadly for Hazel they knew nothing of horse care and left Hazel alone to graze in a vineyard fenced with barbed wire, where the resident dog chased her and pulled her tail for fun! Noticing that the mare was growing thinner and virtually tailless while her feet were growing longer and longer, Hazel's rescuers realized they were in over their heads and called the Rogue Valley Humane Society.

While the RVHS does not generally work with large animals, they were so concerned for Hazel—whom they found cowering in a chicken coop—that they had her transported to a foster home hoping they could find a permanent placement for her. The foster home discovered that she was quite wild, extremely difficult to halter, and unwilling to have her hooves trimmed. Hazel was moved to training, where experts were able to halter and work with her to see if she might be trained under saddle.

Sadly for Hazel, she has physical problems with her hind-quarters and cannot be ridden. Additionally, she shows signs of serious emotional trauma. No one really knows what her life was like before her rescue, but something in her past has caused this mare to be very fearful. Without any other alternatives for this beautiful mare, RVHS called Equamore with a plea for help and the lovely Hazel became an Equamore horse.

Hazel can never be ridden, and her still fearful temperament makes her an unsuitable "pasture pet". She is beautiful, she tries to please, she is attached to her herd and her caregivers, and we love her.

OUR HOLIDAY WISH LIST

Hay - One Bale \$20
(Feed a horse for one week)

Hay \$3,750
(Feed everyone for one month)

Complete Our Fencing Project \$12,000

Fodder System \$12,000
(Trial system to grow our own feed for special needs horses)

Back-Up Generator for Main Well / Barn \$7,000
(So we have water when power goes out)

Arena Skylight Replacement \$12,000

Emergency Fund \$25,000

For gifts designated specifically for any item other than Hay, minimum donation is \$500.00.



VOLUNTEERS NEEDED

Equamore needs talent!

We currently have need for volunteers with the following skills:

- Computer Graphics & Design
- Fundraising
- PR / Marketing
- Site Checks to verify potential Hay Bank recipients
- Errands (dropping off materials, picking up medicines, etc.)
- Event Planning
- Gardening



Chance

CALENDAR OF EVENTS

Year-End Celebration

December 6th, 2014

12:00pm - 2:00pm

Year-End Celebration

December 27th, 2014

12:00pm - 2:00pm

Equamore Sanctuary

4723 Highway 66

Ashland, OR 97520

